



*To the path
we each
believe in.*

TOYO
LANGUAGE SCHOOL



TLSなら叶う “あなただけの” 日本語留学

customized program designed just for you

世界中から集まる留学生
40以上の国と地域

One Global Classroom:
Study with Students from over 40 Countries and Regions

コミュニケーション・情報収集・学習を支える

Microsoft Teamsで

留学生生活をより豊かにする

Enrich Student Life with Microsoft Teams:
A Hub for Communication and Learning

進路実現のための

5つのPLAN

5 Plans for Future Success

東京で学ぶ

Tokyo: Where Learning Comes Alive

入学から卒業までサポートする

My Teacher

と目標達成

Reach Your Goals with My Teacher:
Supporting You from Enrollment to Graduation

滋慶学園82校の グループネットワーク

Connected with 82 Jikei Gakuen Group Institutions

1年間で交流する日本人ゲスト

1,000人以上

Meet Over 1,000 Japanese Guests Every Year

TLSの

教育システム

customized program designed just for you

学習の流れ

東洋言語学院には5つの課程があり、各課程は1学期3か月で構成されています。それぞれの課程に学習期間が設けられています。

Toyo Language School offers 5 courses, and each semester within these courses consists of 3 months. Each course has a designated study period.

동양언어학원에는 5개 과정이 설치되어 있고, 각 과정은 1학기 3개월이 한 학기로 구성되어 있습니다. 각 과정에 학습 기간이 설계되어 있습니다.

課程 Course	入学時期 Admission Period
キャリアデザイン進学専攻 2年課程 Career Design for Higher Education Preparation, 2-Year Course	4月 April
キャリアデザイン進学専攻 1年9か月課程 Career Design for Higher Education Preparation, 1-Year 9-Month Course	7月 July
キャリアデザイン進学専攻 1年6か月課程 Career Design for Higher Education Preparation, 1-Year 6-Month Course	10月 October
キャリアデザイン進学専攻 1年3か月課程 Career Design for Higher Education Preparation, 1-Year 3-Month Course	1月 January
キャリアデザイン就職専攻 1年課程 Career Design for Employment Preparation, 1-Year Course	4月 April

1年後には...

相手や場面に合わせた

コミュニケーションが取れるようになります!

You will be able to communicate in a way that suits the person and the situation!

상대와 장면에 맞는 커뮤니케이션이 가능해집니다



~1year

コミュニケーションの幅が広がる中で、気持ちや配慮を言葉にのせて伝える力を養い、他者とのより良い関係づくりへとつなげていきます。

As the range of communication expands, students will develop the ability to express their feelings and consideration in words, which will lead to building better relationships with others.

커뮤니케이션의 폭이 넓어지는 가운데 기본과 배려를 언어에 섞어서 전달하는 힘을 기르고 타인과 더욱 좋은 관계 만들기로 이어집니다.

~6months

教室で学んだことを生活の中で使い、留学生活の基盤を築きます。サポートを受けながら、身近な話題について理解し、自分の言葉で話せる力を育てます。

You will use what you learn in the classroom in your daily life and build a foundation for your study abroad experience. With support, you will develop the ability to understand familiar topics and speak in your own words.

교실에서 배운 것을 생활 속에서 사용, 유학 생활의 기반을 다집니다. 서포트를 받아 가면서 익숙한 화제에 대해 이해하고, 자신의 언어로 말하는 힘을 기릅니다.

2年後には...

進路や学習の目的に合わせて

日本語を実用的に活用できるようになります!

You will be able to use Japanese practically, in accordance with your future path and learning goals!

진로와 학습의 목적에 맞춰 일본어를 실용적으로 활용할 수 있습니다!



TLSの EVENT



入学式

Entrance Ceremony

日本での目標達成のための最初の授業です。

This is the first class for achieving your goals in Japan.

일본에서 목표 달성을 하기 위한 최초의 수업입니다.



新田地域ふれあい

フェスティバル

Shinden Area Fureai Festival

地域と交流し、相互理解を深めるためのイベントです。

This is an event to interact with the local community and deepen mutual understanding.

지역과 교류하고 상호이해를 깊이 하기 위한 이벤트입니다.

認定日本語教育機関について

About Nationally Accredited Japanese Language Educational Institutions

인정 일본어 교육기관에 대해

東洋言語学院は、日本語教育機関の質の確保と向上を目指す教育機関として、文部科学省へ認定申請をしました。「日本語を使ってできること」に注目した独自の教育理念に基づき、発展的かつ想像的なカリキュラムで、学習者が目指す到達レベルに向けて体系的に学習できるよう支援しています。留学生が直面するあらゆる課題を考慮した学習を通じて、「自ら発見し、自ら考え、自ら伝える」ことができる人材の育成を目指しています。

Toyo Language School has submitted an application for accreditation to the Ministry of Education, Culture, Sports, Science and Technology as an educational institution aiming to ensure and improve the quality of Japanese language education. Based on a unique educational philosophy that focuses on "what you can do with Japanese," we offer a progressive and creative curriculum that supports students in systematically studying to reach the level they aim to achieve. Through learning that takes into consideration all the challenges international students face, we aim to cultivate individuals who can discover on their own, think on their own, and communicate on their own. Toyo Language School offers 5 courses, and each semester within these courses consists of 3 months.

동양언어학원은 일본어 교육기관의 질 확보와 향상을 목표로 하는 교육기관으로서 문부과학성에 인정 신청을 했습니다. 「일본어를 사용해 가능한 것」에 주목한 독자 교육 이념을 바탕으로 발전적이고 창조적인 커리큘럼으로 학습자가 목표로 하는 도달 레벨을 향해 체계적인 학습이 가능하도록 지원합니다. 유학생이 직면하는 많은 과제를 고려한 학습을 통해 「스스로 발견하고, 스스로 생각하고, 스스로 전달하는」 것이 가능한 인재 육성을 목표로 합니다.

1year~

1年間の学習まで完了すると、卒業までの目標は、進路や学習の目的、選択するレベルによって一人ひとり異なります。

Upon completing 1 year of study, each student's goals for graduation will vary depending on their future path, learning objectives, and chosen level.

1년간의 학습까지 완료하면 졸업까지의 목표는 진로와 학습의 목적, 선택하는 레벨에 따라 개인이 다릅니다.

上級日本語

Advanced Japanese

就職や大学院進学など、自分の未来につながる授業を選び、実際の場面で日本語を使いこなす力をのびます。

Students choose classes that will connect them to their future, such as employment or graduate school, and develop the ability to use Japanese effectively in real-world situations.

취직과 대학원 진학 등, 자신의 미래와 이어지는 수업을 선택, 실제 장면에서 일본어를 사용할 수 있는 실력을 향상합니다.



大学

University

自分のキャリアを考え、大学選びから入学後に求められる資質と能力の獲得を目指します。

Considering one's career path, students aim to acquire the qualities and abilities required from the time they choose a university through to after enrollment.

자신의 커리어를 생각해, 대학 선택부터 입학 후에 요구되는 자질과 능력의 습득을 목표로 합니다.



美術日本語

Japanese for Art

美術の基礎知識を身に着け、自分の人生や美術との関わり、作品の特徴を効果的にアピールする創造的な思考力を強化します。

Students aim to acquire basic knowledge of art and strengthen their creative thinking to effectively convey their relationship to art and their own lives, as well as the characteristics of artworks.

미술 기초 지식을 익히고, 자신의 인생과 미술에 관해 작품의 특징을 효과적으로 어필하는 창조적인 사고력을 강화합니다.



運動会

Sports Day

教室の外で、いつもとは違う方法でコミュニケーションをとり、一致団結します。Outside the classroom, students unite through communication that's different from usual.

교실 밖에서 평소와 다른 커뮤니케이션으로 일치단결합니다.



修学旅行

School Field Trip

集団行動を学びながら思い出を作ります。

Students create memories while learning group activities.

단체 행동을 배우면서 추억을 만듭니다.



一人ひとりの目標に合わせて 自分の学びをデザインする

Design your own learning to suit your individual goals
개개인 목표에 맞춘 자신의 학습을 디자인한다

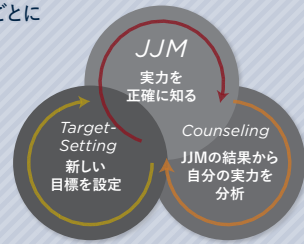


JCT 教育システム JCT Education System

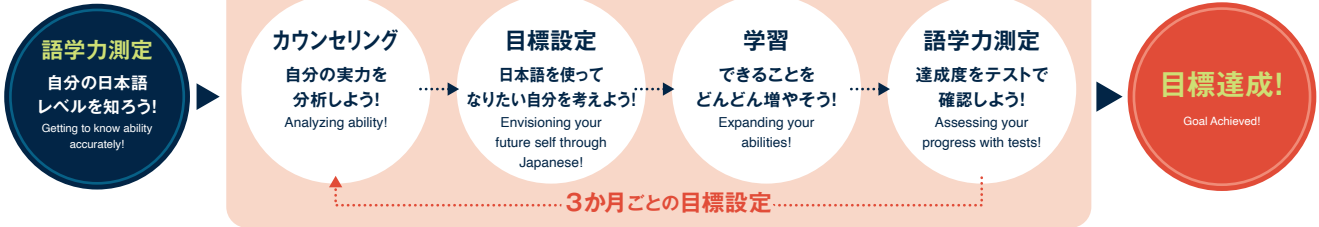
JCT 教育システムとは、語学測定で自分の日本語レベルを知り、目標を立てて、学習するといった流れを3か月ごとに学習者個人の目標設定を繰り返すことで、目的達成を目指す教育方法です。カリキュラムは、学生の特徴・学習時間・科目の趣旨&授業の概要・課ごとの目標を考慮して組まれます。

The JCT Education System is an educational method that aims for goal achievement by having learners assess their Japanese level through language testing, set goals, and study-repeating this individual goal-setting process every 3 months. The curriculum is designed considering student characteristics, the duration of study, the purpose of each subject and an overview of the classes, and the objectives for each unit.

JCT 教育システムは、毎学検定で自分の日本語レベルを知り、目標を立てて、学習するといった流れを3か月ごとに学習者個人の目標設定を繰り返すことで、目的達成を目指す教育方法です。カリキュラムは、学生の特徴・学習時間・科目の趣旨&授業の概要・課ごとの目標を考慮して組まれます。



3か月ごとにあなたに合う目標を立てて目標達成を目指そう!



COUNSELING SHEET

それぞれの学生に置かれた状況や必要な能力に応じて、「日本語を使ってできること」が設定された「Can do」を評価基準として活用されたカウンセリングシートを使って目標達成を目指そう!

Let's aim to achieve goals using a counseling sheet that uses "Can do" as an evaluation criterion, which sets out what each student can do using Japanese, depending on their situation and required abilities!

학생들이 처한 상황과 필요한 능력에 맞춘 「일본어를 사용해서 할 수 있는 것」이 설정된 「Can do」를 평가 기준으로 활용한 카운슬링 시트를 사용해 목표 달성을 이루자!

TLSカウンセリングシート
- 言語熟達度 -

	A1	A2	B1	B2	C1	C2	日本語熟達度	できたこと
会話は 得意							B1	
聞く こと							A2	
							B1	
							A2	
							B1	
							B1	

聞く・読む・話す (やりとり・発表)・書くの5つの言語活動にそれぞれの学生に合わせた「Can do」が示されています。Each of the 5 language activities-listening, reading, speaking (conversational/presenting), and writing-has "Can do" statements tailored to individual students.

A1 ~ C2 までの各レベルで示され、できたことが評価として確認できます。At each level from A1 to C2, "Can do" statements are provided, allowing students to assess their achievements.

実態調査のデータを基に教育をアップデート!

Update the education based on survey data!

실태조사 데이터를 기초로 교육을 업데이트!

「Can do」とは、外国語を使って何ができるかを「～できる」という形式で「聞く」「読む」「話す（やりとり・発表）」「書く」の5つの言語活動それぞれを指標化したものです。東洋言語学院では、このCan doに基づいて「日本語を使ってできること」に注目した教育を提供しています。

“Can do” is a framework that quantifies what one can do using a foreign language in the form of “can do,” measuring each of the 5 language activities: “listening,” “reading,” “speaking (conversational/presenting),” and “writing.” At Toyo Language School, we provide education focused on “what you can do with Japanese,” based on this Can do framework.

「Can do」란 외국어를 사용해 무엇이 가능한지를 「～できる」라는 형식으로 「듣기」「읽기」「말하기 (대화·발표)」 「쓰기」 5가지 언어활동을 각각 지표화한 것입니다. 동양언어학원에서는 이 Can do에 근거해 「일본어를 사용해서 할 수 있는 것」에 주목한 교육을 제공하고 있습니다.

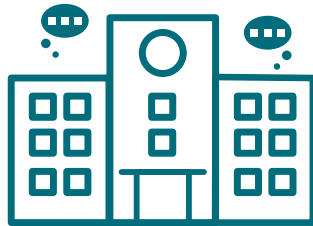
先輩学生たちが実際に直面した問題を Can do として収集

Gathering real-life challenges faced by former students as language ability statements (Can do).



レベルや場面に合わせて実例をデータ化!

Data-driven examples tailored to levels and contexts!



授業のカリキュラムに反映

Incorporating tailored examples into the curriculum.



ポートフォリオ型のオリジナル教材を中心とした授業

Classes centered around original, portfolio-style teaching materials

포트폴리오형オリジナル 교재를 중심으로 한 수업

このテキストは、すべての日本語学習者ではなく、留学生のために作られました。留学生が実際の生活で使える場面を盛り込み、普段使いができるようにしています。テキストの余白にメモやわかったことをどんどん書き込むことで、3か月後には勉強の成果がまとまった自分だけの宝物になります。

This textbook was created not for all Japanese language learners, but for international students. It incorporates situations that international students can use in real life, enabling them to use it in everyday situations. By writing down notes and what you have learned in the margins of the textbook, after 3 months it will become your own treasure summarizing your study achievements.

이 교재는 모든 일본어 학습자가 아닌 유학생을 위해 만들어졌습니다. 유학생이 실제 생활에서 사용하는 장면을 다수 적용하여 평소 사용이 가능하게 했습니다. 교재 여백에는 메모와 알게 된 것을 적어 갈 수 있고 3개월 후에는 학습의 성과가 집결된 자신만의 보물이 됩니다.

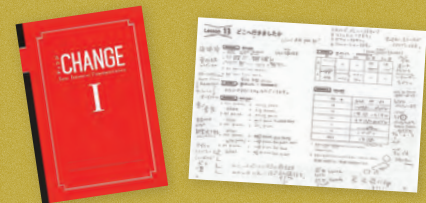
オリジナルテキスト

“CHANGE”

日本語の勉強を新しく始める学生のために開発した日本語教材です。

This Japanese language teaching material was developed for students who are just starting to learn Japanese.

일본어 공부를 새롭게 시작하는 학생들을 위해 개발한 일본어 교재입니다.



CHOOSE!

授業を選べる

Choose your classes

수업을 선택한다

学生の日本語力やニーズは一人ひとり異なります。日本語力を効率的に伸ばすために設置された選択授業を、目的に合わせて決めていきます。

Each student's Japanese language ability and needs are different. To efficiently improve Japanese skills, students can choose from a selection of elective classes based on their goals.

학생의 일본어 실력과 요구는 개인이 다릅니다. 일본어력을 효율적으로 향상하기 위해서 준비된 선택 수업을 목적에 맞추어 결정합니다.



オンラインとオフラインを 融合した最先端の日本語教育

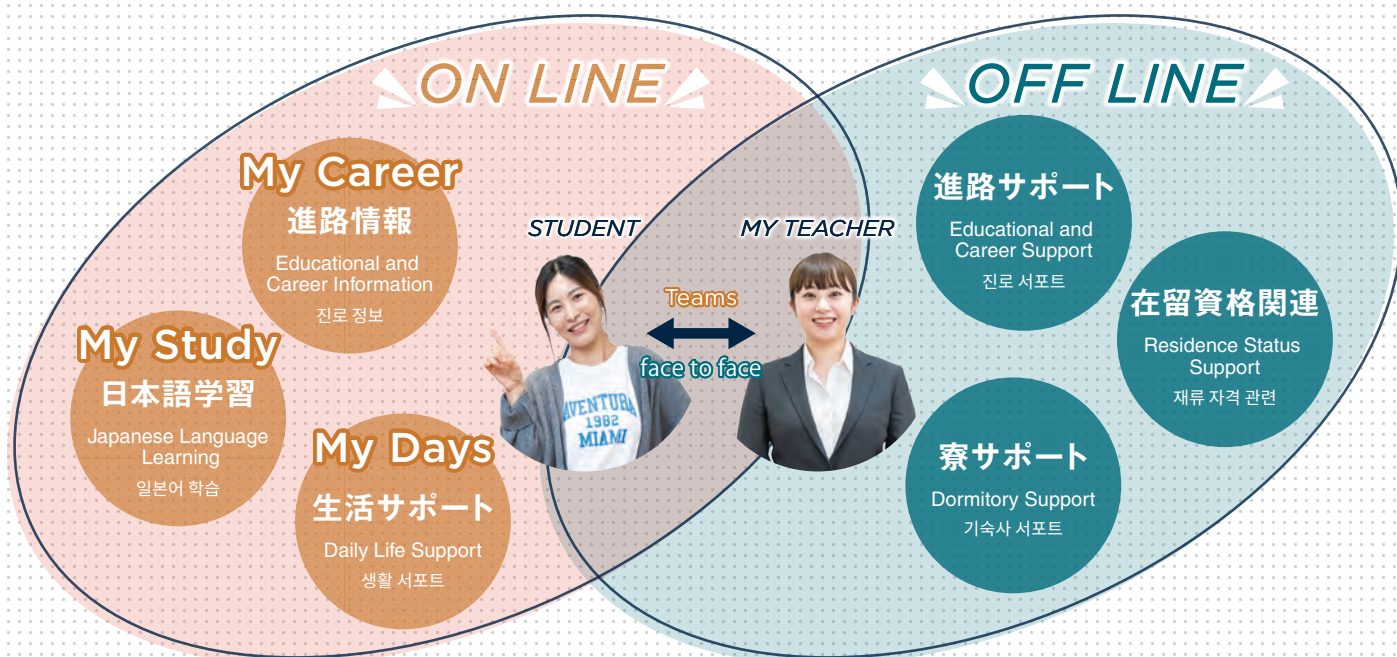
Cutting-edge Japanese language education
integrating online and offline learning

온라인과 오프라인을 융합한 최첨단 일본어 교육



オンラインとオフラインの融合

Online Merges with Offline



オンラインとオフラインで充実したサポート

Comprehensive Online and Offline Support 온라인과 오프라인으로 충실한 서포트

オンラインではいつでもどこでも学校とつながり、自己学習や生活、進路の情報が手に入ります。学校では MyTeacher による対面サポートも受けられ、とても助かっています。

Online, students can connect with the school anytime, anywhere and access information for self-study, daily life, and further education or employment. At school, you also receive face-to-face support from My Teacher, which is incredibly helpful.

온라인으로는 언제든지 어디서든지 학교와 연결해 자기 학습과 생활, 진로의 정보를 얻을 수 있습니다. 학교에서는 My Teacher와의 대면 서포트로 매우 도움이 됩니다.

TLSの4つのM

TLS's 4 Ms

TLS의 4M

安心して留学生活を送ってもらえるよう、オンラインとオフラインからサポートする TLS の4つのMが留学生に寄り添います。

TLS's 4 Ms provide online and offline support to international students ensuring a safe study-abroad experience.

안심하고 유학 생활을 보낼 수 있도록 온라인과 오프라인에서 서포트하는 TLS의 4M 이 유학생에게 다가갑니다.

My Teacher

My Teacher は入学から卒業まで伴走する「あなたのため」のサポーターです。クラスが変わってもレベルが変わっても My Teacher は変わりません。学生一人ひとりの成長過程を把握し、学習面だけでなく、進路面、生活面にいたるまでサポートします。

My Teacher is your personal supporter who stays with you from enrollment to graduation. Even if your class or level changes, My Teacher remains the same. They understand your individual growth process and support not only your studies, but also your further education, employment, and daily life.

My Teacher는 입학부터 졸업까지 여러분과 함께하는「당신을 위한」서포터입니다. 클래스나 레벨이 바뀌어도 My Teacher는 변하지 않습니다. 학생 개개인의 성장 과정을 파악하고 학습뿐만 아니라 진로, 생활에 이르기까지 서포트합니다.

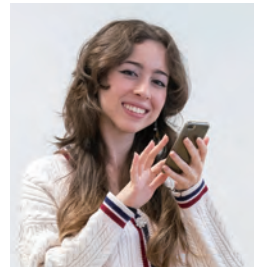


My Study

毎日の授業の復習から JLPT や EJU の試験対策まで、24 時間 365 日、自分で学習を進められるコンテンツを多数用意しています。勉強内容に迷ったときには、チャットボット「My Study」にお勧めコンテンツを聞くこともできます。

From daily lesson reviews to preparation for the JLPT and EJU exams, we offer a wide range of content that allows you to study independently, 24 hours a day, 365 days a year. If you're unsure what to study, you can ask the chatbot "My Study" for recommendations.

매일의 수업 복습부터 JLPT 와 EJU 시험 대책까지 24 시간 365일, 학습에 맞춘 콘텐츠를 다양하게 준비하고 있습니다. 무엇을 공부해야 할지 모를 때는 챗봇「My Study」에게 추천 콘텐츠를 물어봐 주세요.



My Days

チャットボット「My Days」は、日常生活で困ることを解決できるような情報を提供しています。病気や怪我の時、ルールを確認したい時など、24 時間いつでも回答してくれます。

The chatbot "My Days" provides information to help you solve everyday problems. Whether you're sick, injured, or want to check certain rules, it's available 24/7 to assist you.

챗봇「My Days」는 일상생활에서 곤란한 것을 해결할 수 있도록 정보를 제공합니다. 질병이나 부상이 있을 때, 규칙을 확인하고 싶을 때 24시간 언제든지 회답해 줍니다.

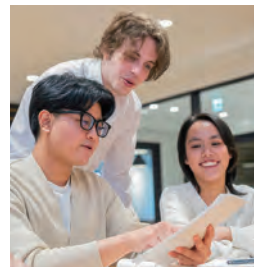


My Career

進路ごとに用意している 5 つのプランの中で、希望する進路に関して知っておくべきこと、就職情報や学校情報の検索、面接のポイントや対策ツールなどを発信しています。手に入れた情報を使って、My Teacher とのカウンセリングを充実させていきます。

Within the 5 plans prepared for each future path, we provide essential information related to students' desired paths, including job and school search tools, key points for interviews, and practical resources. The information gathered can be used to enhance consultations with My Teacher.

진로별로 준비된 5개 플랜 중에서 희망하는 진로에 관해 알아두어야 할 것, 취직 정보와 학교 정보를 검색, 면접 포인트와 대책 방법 등을 발신하고 있습니다. 손에 넣은 정보를 사용해 My Teacher와 카운슬링을 충실히 해갑니다.



Teamsの活用

Use of Teams

Teams 활용

ホームページ

Homepage
홈페이지

日常的に使用する各種フォーム、ルールをまとめたオリエンテーション BOOK などが見やすく保存されています。My Study などのコンテンツもホームページから閲覧することができます。

Frequently used forms, orientation book that summarize rules are neatly organized and easy to access. Content like My Study can also be viewed from the homepage.

일상적으로 사용하는 각종 양식, 규정을 정리해 둔 오리엔테이션 BOOK 등을 보기 쉽게 보존하고 있습니다. My Study 등의 콘텐츠도 홈페이지에서 볼 수 있습니다.

チーム運用

Team Management
팀 운용

目的に合わせてチームを運用しています。学生全体へのアナウンス、クラスに関するお知らせやプリント・教材の配布、課題の提出、安否確認、寮生に特化した情報提供など、わかりやすく分類されています。

Teams groups are managed according to their purpose. They are clearly categorized, including announcements to all students, class-related information and distribution of handouts and materials, assignment submission, safety checks, and information specifically for dormitory students.

목적에 맞는 팀을 운용합니다. 학생 전체 대상 안내, 클래스에 관한 소식과 프린트·교재 배부, 과제 제출, 안부 확인, 기숙사생에게 특화된 정보 제공 등 알기 쉽게 분류되어 있습니다.

5

目的にあわせて
選べる!

つの

PLAN

Five plans to your objectives



専門学校 進学プラン

Plan for Professional Training College

「好きを仕事にする」ための勉強ができる場所。
勉強の目的、身につけたい力、最適な学校選びなど、
My Teacherと一から進学準備を進めます。

A place to study for turning your passion into a career. Together with My Teacher, we'll prepare for your academic journey from the ground up—clarifying your study goals, identifying the skills you want to master, and selecting the best school for you.

「 좋아하는 것을 직업으로」를 위한 공부를 할 수 있는 장소. 공부의 목적, 기르고 싶은 실력, 최적의 학교 선택 등. My Teacher와 하나부터 진학 준비를 시작합니다.



大学 進学プラン

Plan for University

「日本の大学」に進学する目的を明確にして、
「行ける大学」ではなく、「行きたい大学」を見つけて
突き進みます。

By clarifying your goal of attending a Japanese university, students aim not for a university they can get into, but for the university they truly want to attend, and move forward with determination.

「 일본 대학」에 진학하는 목적을 명확히 하고 「갈 수 있는 대학」이 아닌 「가고 싶은 대학」을 발견하고 도전합니다.



大学院 進学プラン

Plan for Graduate School

研究室や大学のアカデミックレベルを
上げることができる人材、課題を分かち合ってチームで
挑戦する一員になれる人材を目指します。

We aim to cultivate individuals who can contribute to raising the academic level of research labs and universities, and who can become team members capable of tackling challenges by sharing responsibilities.

연구실과 대학의 아카데미 수준을 높일 수 있는 인재, 과제를 서로 나누어 팀으로 도전하는 일원이 되는 인재를 목표합니다.



就職プラン

Plan to Find Employment

日本の文化や就労習慣、企業文化や組織の約束事など、新しい環境にポジティブに向き合える適応力を築き、日本でのキャリアアップを描きます。

You will develop the adaptability to positively approach a new environment, including Japanese culture, work habits, corporate culture, and organizational protocols, and envision career advancement in Japan.

일본 문화와 근로 습관, 기업 문화와 조직 규칙 등, 새로운 환경에 긍정적으로 마주하는 적응력을 기르고 일본에서 커리어업을 그려갑니다.



美術大学 進学プラン

Plan for Art University

作品を通じて伝えたい「あなたらしさ」を明確に。
来日前に描いた母国の美術と日本の美術を融合させること、
新しいものを創造する力を磨きます。

Clarify the "authentic you" you wish to convey through your works.
Develop the ability to create new expressions by combining the art of your home country—drawn before coming to Japan—with Japanese art.

작품을 통해 전하고 싶은 「자신다움」을 명확히, 입국 전에 그린 모국의 미술과 일본의 미술을 융합시키는 것, 새로운 것을 창조하는 힘을 기릅니다.

進路決定情報は
こちらから
チェック!



Plan for Professional Training College

専門学校進学プラン



エキスパートがあなたに最適な進学先選びを全力サポート

Experts provide full support to help you choose the best path to further education
전문가가 여러분에게 최적의 진로 결정을 서포트

3つのPOINT

- **専門知識や用語を確実に理解する日本語能力を習得**
Acquire Japanese language skills to reliably understand specialized knowledge and terminology
전문 지식과 용어를 확실하게 이해하는 일본어 능력을 습득
- **エキスパートによる最適な進路決定支援**
Expert-provided support for making the most suitable decisions regarding further education
전문가의 최적 진로 결정 지원
- **卒業生実績をもとにした入学後の学習計画を作成**
Create a post-admission study plan based on the track record of our graduates
졸업생 실적을 바탕으로 한 입학 후의 학습 계획을 작성

Plan for University

大学進学プラン



EJUで高得点を獲得し、大学の講義を受講できるレベルまで成長

Achieve high scores on the EJU and develop to the level required to attend university lectures
EJU에서 고득점을 획득하여 대학 강의를 수강할 수 있는 레벨까지 성장

3つのPOINT

- **EJU高得点、大学独自の二次試験・小論文・面接対策特別カリキュラム**
Special curriculum for high EJU scores and preparation for university-specific secondary exams, essays, and interviews
EJU 고득점, 대학 독자적인 2차 시험·소논문·면접 대책 특별 커리큘럼
- **EJU日本語科目以外も授業内でカバー**
Coverage of subjects beyond the EJU Japanese exam within classes
EJU 일본어 과목 이외에도 수업 내에서 지원
- **進学先決定に向けたカウンセリング面接・出願書類作成の手厚いサポート**
Comprehensive support for counseling interviews and application document preparation when deciding on your educational path
진로 결정을 위한 카운슬링 면접·출원서류 작성의 꼼꼼한 서포트

Plan for Graduate School

大学院進学プラン



教授を探し、研究計画書を作成、万全な準備で大学院受験へ

Find professors, create research proposals, and prepare thoroughly for graduate school entrance exams
교수를 찾고 연구 계획서를 작성, 만반의 준비로 대학원 수험에

3つのPOINT

- **研究テーマをベースとした大学院情報の徹底収集**
Comprehensive collection of graduate school information based on research themes
연구 테마를 바탕으로 한 대학원 정보의 철저한 수집
- **独特な日本の大学院入試システムを踏まえた受験計画作成サポート**
Support for creating exam plans based on Japan's unique graduate school entrance system
독특한 일본의 대학원 시험 시스템을 고려한 수험 계획 작성 서포트
- **小論文に強くなるアカデミックライティング**
Academic writing to strengthen essay skills
소논문에 강해지는 아카데미 라이팅

Plan for Art University

美術大学進学プラン



経験豊富な美術講師の指導で美術大学への進学を実現

Achieve admission to art universities through instruction by experienced art instructors
경험 풍부한 미술 강사의 지도로 미술대학 진학을 실현

3つのPOINT

- **出願基準を満たす日本語能力を確実に身に着的ための計画と授業**
Plan and classes to ensure you meet Japanese language proficiency requirements for application
출원 기준을 갖춘 일본어 능력을 확실하게 기르기 위한 계획과 수업
- **経験豊富な「美学校」講師による学内での授業**
Classes taught by experienced "Bigakko" instructors within the school
경험 풍부한 「美学校(비각코)」 강사의 교내에서의 수업
- **美術大学校内模試・美術大学院特別クラス開講**
Art university mock exams and specialized graduate art program classes offered
미술대학 내 모의시험・미술대학원 특별 클래스 강의

Plan to Find Employment

就職プラン



日本の就職活動の特徴を知り、自分に最適な業界・企業を見つける

Understanding Japanese job hunting characteristics to find the optimal industry and company best suited to you
일본의 취직 활동의 특징을 알고 자신에게 최적의 업계・기업을 찾는다

3つのPOINT

- **一人ひとりの適性や計画に応じた信頼性の高い支援を実現する無料職業紹介事業**
Free career placement service providing reliable support tailored to each individual's aptitude and plan
개개인 적성과 계획에 맞춘 신뢰성 높은 지원을 실현하는 무료직업소개사업
- **日本の就職、就活システムの徹底解説**
Comprehensive explanation of Japan's job hunting and employment system
일본의 취직, 취업 활동 시스템의 철저 해설
- **好印象を与えるための履歴書作成指導、面接トレーニング**
Resume writing guidance and interview training to leave a good impression
좋은 인상을 주기 위한 이력서 작성지도, 면접 트레이닝



学生生活サポート

Daily Life Support 학생 생활 서포트

来日後の
手続きも安心!
No need to worry about procedures
after arriving in Japan!
입국후 수속도 안심!



SUPPORT



在留カード Residence Card

空港において交付される ID カードです。入国後は居住地の届け出が必要ですが、希望者には職員が代行します。

This is an ID card issued at the airport. After entering the country, you must register your place of residence, however, staff can assist with this process for those who wish.

공항에서 교부되는 ID카드입니다. 입국 후에는 거주지 신고가 필요합니다만, 희망자에게는 교직원 이 대행합니다.



国民健康保険 National Health Insurance

長期滞在のためには、国民健康保険に加入する必要があります。医療費の負担が軽くなります。

For long-term stays, you will need to enroll in the National Health Insurance. This will reduce your medical expenses.

장기 체재의 경우에는 국민건강보험에 가입이 필요합니다. 의료비 부담이 줄어듭니다.



銀行口座開設 Opening a bank account

滋慶学園のスケールメリットを活かして、口座開設をサポートします。希望者に対しては、学内の説明会で一緒に書類を作成します。

Taking advantage of the scale of the Jikei Group, we provide support for opening bank accounts. For those who wish, we will assist in preparing the necessary documents at an information session held at school.

지케이학원 그룹의 이점을 살려 계좌 개설을 서포트합니다. 희망자에 한해서 교내 설명회에서 함께 서류를 작성합니다.

SAFETY

防災・事故防止訓練 Disaster Accident Prevention Drill

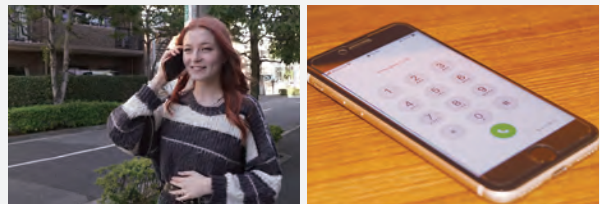


1年に4回、防災・事故防止訓練を実施しています。災害や事故の特徴、起こりうる事態、交通ルールを学び、実際に訓練することで、安心して留学生生活を過ごします。

We conduct disaster prevention and accident prevention drills 4 times a year. By learning about the characteristics of disasters and accidents, possible situations, and traffic rules, and by actually participating in drills, students can enjoy a secure study abroad experience.

1년에 4회 방재·사고 방지 훈련을 실시하고 있습니다. 재해와 사고의 특징, 일어날 수 있는 사태, 교통법규를 배워 실제로 훈련함으로써 안심하고 유학 생활을 보냅니다.

24時間365日緊急連絡受付 24-hour, 365 days Support System



緊急事態に備え、学校は24時間緊急連絡先を設けています。休日や夜間でも交通事故や病気の相談が可能です。

In case of an emergency, school has set up a 24-hour emergency contact. Even on holidays or at night, it is possible to consult about traffic accidents or illnesses.

긴급 사태에 대비하여 학교는 24시간 긴급 연락처를 마련하고 있습니다. 휴일과 야간에도 교통사고와 질병 상담이 가능합니다.

地域の警察や消防の方々も守ってくださるので、 安心して留学生生活を送れます!

Local police and fire departments are here to protect us, so you can enjoy your study abroad experience with peace of mind!

지역 경찰과 소방서도 지켜주시기 때문에 안심하고 유학 생활을 할 수 있습니다!



滋慶学園グループの強み

The strengths of the Jikei Gakuen Group 지케이학원그룹의 장점

生活面でのサポートも充実!
Comprehensive support for daily life!
생활 서포드도 충실!



PARTNER CLINIC



提携医院である「慶生会クリニック（内科・歯科）」が、学生の健康をしっかりサポート。留学課程の学生は、無料で受診できます。診療の予約は学校でサポートします。

Our partner clinic, "Keiseikai Clinic (Internal Medicine and Dentistry)," provides comprehensive health support for students. Students enrolled in study abroad programs can receive medical care free of charge. The school assists with scheduling appointments.

제휴병원인 「케세이카이클리닉 (내과·치과)」이 학생의 건강을 확실히 서포트. 유학 과정의 학생은 무료로 진찰받을 수 있습니다. 진료 예약은 학교에서 서포트합니다.



STUDENT DORMITORY HOME STAY



学校から自転車で15分圏内に約300室の学生寮があります。困ったときは、巡回寮スタッフや Teams で相談してください。ホームステイでは日本文化を体験しながらホストファミリーとの生活ができます。

Approximately 300 student dormitory rooms are located within a 15-minute bike ride from the school. If you encounter any difficulties, please consult the dormitory staff on patrol or via Teams. Homestays allow you to experience Japanese culture while living with a host family.

학교에서 자전거로 15분 이내에 약 300실의 학생기숙사가 있습니다. 곤란할 때는 순회 관리하는 기숙사 스태프와 Teams로 상담해 주세요. 홈스테이에서는 일본 문화를 체험하면서 호스트 패밀리와 생활할 수 있습니다.

GROUP NETWORK

TLS は全国に 82 校の大学院・大学・専門学校・高等専修学校・各種学校を展開する、滋慶学園グループの日本語学校です。

TLS is a Japanese language school operated by the Jikei Gakuen Group, which runs 82 Graduate Schools, Universities, Professional Training Colleges, Upper Secondary Specialized Training School, and various other schools nationwide.

TLS는 전국에 82개교의 대학원·대학·전문학교·고등전문학교·각종학교를 전개하는 지케이학원그룹의 일본어학교입니다.

■ Hokkaido

Hokkaido College of High Technology
Hokkaido Eco College of Wildlife and Nature
Sapporo Belle époque College of Wedding, Confectionery, and Culinary
Sapporo Belle époque College of Beauty
Sapporo College of Nursing and Medical Health
Sapporo Music and Dance, Broadcasting College
Sapporo College of Design and Technology

■ Miyagi

Sendai School of Music and Dance
Sendai College of Design and Technology
Sendai College of Eco and Animals
Sendai College of AgriTech and Café, Patisserie
Sendai College of Medical Health and Sports

■ Saitama

Saitama College of Welfare, Child Care, and Medical Health
Saitama Belle époque College of Confectionery and Culinary

■ Tokyo

Tokyo Information Design Professional University
Tokyo College of Medico-pharmaco-Nursing Technology
Tokyo College of Welfare
Tokyo College of Sports and Recreation
Tokyo College of Medical Sports
Tokyo College of Biotechnology
Tokyo Belle époque College of Confectionery and Culinary
Tokyo Belle époque College of Beauty
Belle époque College of Beauty
Tokyo Wedding and Hotel College
Nihon College of Health Care Services
Shin-Tokyo Dental Technician School
Shin-Tokyo Dental Hygienist School
Akahori College of Confectionery

Tokyo Communication Arts College
Tokyo School of Music and Dance
Tokyo School of Music, Shibuya Campus
Tokyo Dance and Actors Performing Art School
Tokyo Film Center College of Arts
Tokyo College of Anime and e-Sports
TCA Tokyo College of Eco and Animals
Tokyo Hotel·Tourism & Hospitality College
Tokyo Design Technology Center College
Toyo Language School

■ Kanagawa

Yokohama Belle époque College of Beauty

■ Aichi

Nagoya School of Music and Dance
Nagoya College of Design and Technology
Nagoya College of Eco and Animals
Nagoya College of Agri Tech and Culinary Technology
Nagoya College of Medical Health and Sports

■ Kyoto

Kyoto College of Medical Health
Kyoto College of Design and Technology

■ Osaka

Graduate School of Health Care Sciences, Jikei Institute
Jikei University of Health Care Sciences
Osaka College of Medical Technology
Osaka College of High Technology
Osaka College of Health and Welfare
Osaka College of Medical and Welfare
Osaka College of Medical Health and Nursing
Shin-Osaka Dental Technician College
Shin-Osaka Dental Hygienist College
Toyo Medical College

Osaka School of Music
Osaka Dance and Actors Performing Arts School
OCA Osaka College of Design and IT Technology
Osaka College of Eco and Animals
Broadcasting Arts College
Osaka College of Animation and e-Sports
Osaka College of Agri Tech, Horti Tech and Food Tech
Osaka Hotel, Tourism & Wedding College
Osaka School of Music Upper Secondary Specialized Training School

■ Hyogo

Kobe College of Medical Welfare, Chuo Campus
Kobe College of Medical Welfare, Sanda Campus
Kobe College of Patisserie
Himeji College of Medical
Koyo School of Music and Dance Kobe
Koyo College of Design and Technology
Koyo Music, Dance and Art Kobe Upper Secondary Specialized Training School

■ Shimane

Izumo College of Medical Health and Nursing

■ Tottori

Tottori City College of Medical Health and Nursing

■ Okayama

Mimasaka City College of Sports, Health, and Nursing
Jikei Gakuen High School

■ Fukuoka

Fukuoka Belle époque College of Beauty
Fukuoka School of Music and Dance
Fukuoka College of Medical Health and Sports
Fukuoka College of Eco and Animals
Fukuoka College of Design and Technology
Fukuoka College of Hotel, Wedding and Culinary Arts

FACILITY

校舎 Building



東洋言語学院の校舎は、学生が目標を達成し、国際社会で活躍するための基盤を築く場所です。学生の成長を支える最新設備と快適な学習環境を提供しています。

The buildings of Toyo Language School are the places where students can build the foundations to achieve their goals and play an active role in the international community. We provide the latest facilities and a comfortable learning environment to support student growth.

동양언어학원 교사는 학생이 목표를 달성하여 국제사회에서 활약하는 기반을 다지는 장소입니다. 학생의 성장을 지원하는 최신 설비와 쾌적한 학습 환경을 제공합니다.

教室 Classroom



「聞く・読む・話す（やりとり・発表）・書く」力を効果的に伸ばすため、カリキュラムに合わせて教室の机の配置を変えています。

To effectively develop listening, reading, speaking (conversational/presenting), and writing skills, we rearrange the desks in the classroom to suit the curriculum.

「듣기·읽기·말하기 (대화·발표)·쓰기」 실력을 효과적으로 향상하기 위해, 커리큘럼에 맞추어 교실의 책상 배치를 변화시킵니다.

学生ホール Student hall



広々とした学生ホールでは、リラックスしながら友達との時間が楽しめます。

The spacious student hall is a great place to relax and enjoy time with friends.

넓은 학생 홀에서는 휴식하면서 친구들과 즐겁게 지낼 수 있습니다.

図書室 Library



日本語の勉強や研究計画書の作成ができるように、多様な進路に対応した書籍を揃えています。

We stock a wide range of books to support diverse future paths, enabling students to study Japanese and create research proposals.

일본어 공부와 연구 계획서를 작성할 수 있도록 다양한 진로에 대응한 서적이 있습니다.

学校法人 滋慶学園 文部科学省認可
TLS 東洋言語学院
 TOYO LANGUAGE SCHOOL

+81-3-5605-6211

info@tls-japan.com

https://www.tls-japan.com/

東洋言語学院

